

SEVEN WINNING  
TRAVEL APPS

# Condé Nast Traveler

TRUTH IN TRAVEL

JANUARY 2011

20-PAGE  
SPECIAL

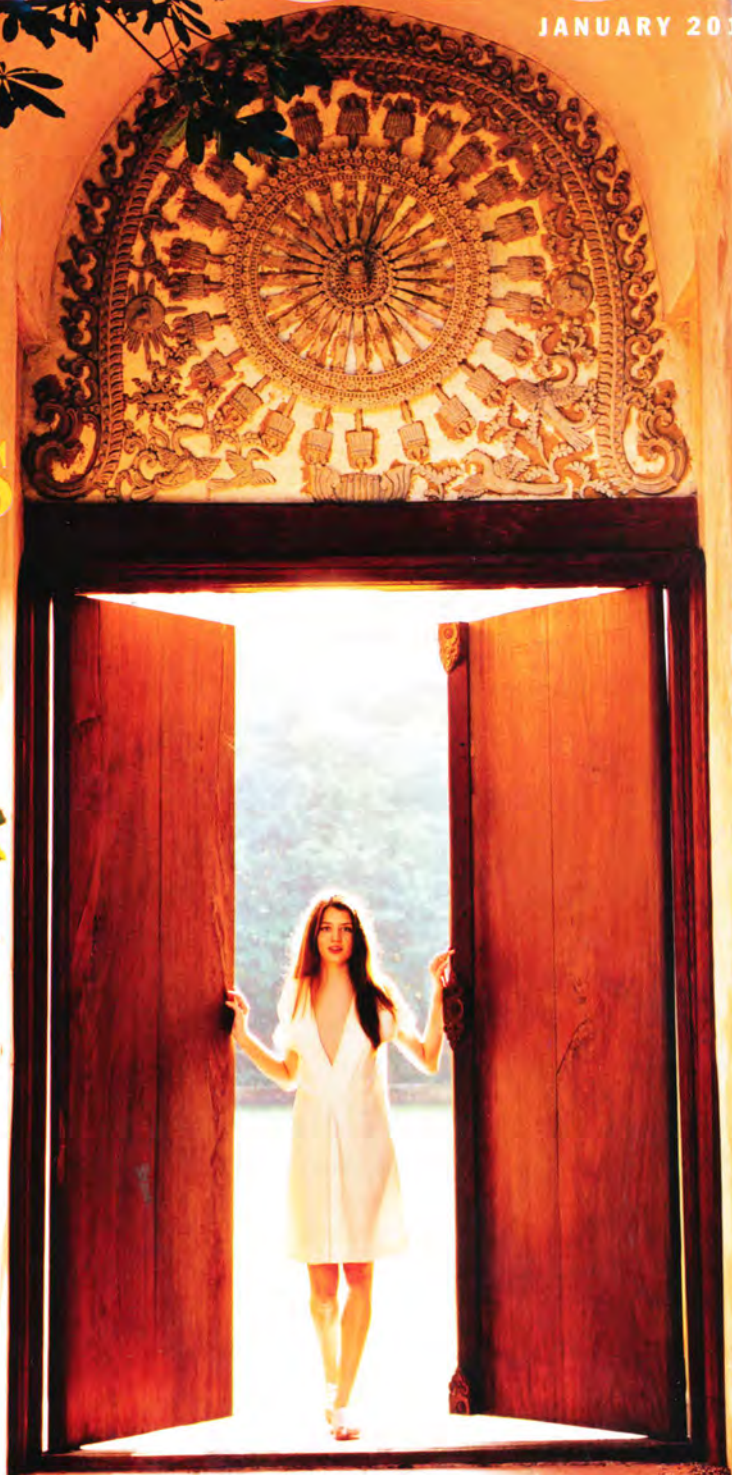
**GOLD  
LIST**  
**WORLD'S  
BEST**  
**504**  
**HOTELS,  
RESORTS  
CRUISE LINES**

PLUS

**EUROPE'S  
RISING STAR**

**SOUTH  
AMERICA'S  
SECRET  
PARADISE**

**INDIA'S  
MAGIC CITY**



---

# 2011 GOLD LIST

THE WORLD'S BEST  
PLACES TO STAY

**504**  
**HOTELS,  
RESORTS,  
AND  
CRUISE  
LINES**

"NOTHING ENDURES BUT change." No, Heraclitus wasn't thinking about hotels, but the axiom applies. *Condé Nast Traveler's* compendium of the best hotels, resorts, and cruise lines in the world, drawn from our annual Readers' Choice Survey (see November 2010), is ever-evolving. Updated annually, it is a truly global tally of peerless travel experiences (and proves the mobility and discriminating tastes of our readers). Case in point: This

year's Gold List has 48 properties appearing for the first time, and we have duly accorded each a detailed review, with readers' quotes (for complete reviews of all 2011 Gold List properties, go to [cntraveler.com/goldlist](http://cntraveler.com/goldlist), or download our soon-to-be-released iPhone or iPad app, *Condé Nast Traveler's 2011 Gold List*). Here's to the newcomers, and to the other hotels, resorts, and cruise lines on these pages, which have withstood the toughest test of all—time.

Pick your plunge at Montage, in Laguna Beach, California: the 90-foot mosaic pool (heated to 82 degrees) or the Pacific. This view might explain the 96.3 location score.



The bar under the 90-foot lobby rotunda, with preserved cells, is "extremely lively and filled with locals."

**Mandarin Oriental, Boston 96.1**  
 96.7 98.4 95.1 93.4 96.7

**Wequassett Resort and Golf Club, Cape Cod 90.4**  
 84.3 86.0 92.9 97.7 93.0 88.1

**Blantyre, Lenox 93.0**  
 93.0 97.7 88.4 95.3 90.7

**Canyon Ranch, Lenox 87.7**  
 81.3 87.5 87.5 89.1 89.1 92.1

**NEW The Cottages & Lofts at the Boat Basin, Nantucket 90.8**  
 88.0 92.0 81.0 100 92.0

With downtown Nantucket and the Boat Basin within walking distance, this property provides "the best of the island," reflected in the perfect location score. Harborfront-facing cottages—with full kitchens, polished pine floors, slate bathrooms, and dormer windows—overlook the docks: "hearing the water softly lapping against the pylons, seeing boats bobbing around, it just felt so appropriate." There is no restaurant on-site, but meals are available in town or at the White Elephant, its sister hotel.

**The Wauwinet, Nantucket 93.6**  
 93.6 87.9 97.0 92.4 93.8

**MONTANA**

**NEW Triple Creek Ranch, Darby 88.8**  
 84.4 90.3 87.5 90.3 90.3 90.0

At this newcomer looking onto the Bitterroot Mountains, rooms are in 23 log cabins that ooze rusticity with their exposed

log walls and slate bathrooms. "Our room had a view of the woods and a hot tub on the deck"—"it was very private and peaceful." The restaurant has cathedral ceilings and prepares "superb, world-class" cuisine ranging from traditional French to Southwestern, with signature dishes like venison carpaccio with marinated plums. "There were fresh cookies every day when we returned from activities" such as spotting mountain lions, moose, and eagles in the wilderness.

**NEVADA**

**Bellagio, Las Vegas 91.0**  
 92.1 83.8 91.1 95.3 92.8 86.8

**Encore at Wynn, Las Vegas 90.5**  
 95.7 88.1 90.4 85.3 92.9 91.4

**Four Seasons, Las Vegas 90.8**  
 92.9 95.7 91.7 83.5 90.0 91.4

**The Palazzo, Las Vegas 89.7**  
 94.6 83.0 88.0 90.9 91.7 89.8

**Venetian Resort Hotel Casino, Las Vegas 89.2**  
 93.1 83.5 87.7 92.0 89.9 87.9

**Wynn, Las Vegas 91.3**  
 95.9 88.7 91.6 87.7 93.8 90.0

**NEW HAMPSHIRE**

**Wentworth by the Sea Hotel & Spa, New Castle 89.0**  
 90.5 91.1 83.3 89.9 90.3

**NEW MEXICO**

**Encantado, Santa Fe 87.6**  
 93.1 89.7 82.8 82.8 89.7

**El Monte Sagrado Living Resort and Spa, Taos 87.8**  
 94.0 84.0 85.7 84.0 92.0 87.2

**NEW YORK**

**NEW Mohonk Mountain House, New Paltz 90.5**  
 79.3 90.4 88.0 96.4 94.0 95.1

Ninety miles north of New York City, this wood and Shawangunk-stone castle resort and National Historic Landmark in the Hudson Valley is "a huge building, but perfectly proportioned and integrated into the mountain landscape—it's a dream from the Victorian era of America's history." Rooms are uniquely decorated, and some have balconies and fireplaces. "The service is always top notch." The spa's outdoor mineral pool is heated; the property also offers 85 miles of hiking trails, a stable, and groomed cross-country skiing terrain.

**The Carlyle (Rosewood), New York 89.0**  
 87.3 91.2 89.0 90.2 87.4

**Four Seasons, New York 93.1**  
 93.0 94.0 90.3 95.0 92.9

**The Lowell, New York 88.1**  
 86.2 89.7 81.5 100 82.8

**Mandarin Oriental, New York 90.7**  
 92.6 85.6 86.9 95.3 93.0

**Ritz-Carlton New York, Central Park, New York 92.3**  
 92.5 93.4 89.6 95.7 90.4

**St. Regis, New York 90.8**  
 91.5 90.0 88.3 94.4 89.6

**Trump International Hotel & Tower, New York 89.5**  
 91.5 87.5 91.3 96.1 81.3

**2011 GOLD LIST**

For full reviews of every hotel and resort on the 2011 Gold List, with reader quotes, go to [cntraveler.com/goldlist](http://cntraveler.com/goldlist). (Or download our soon-to-be-released iPhone or iPad app: Condé Nast Traveler's 2011 Gold List.)